

## FITTING INSTRUCTIONS

### FRICITION STAYS IPA NO.s 23820-23

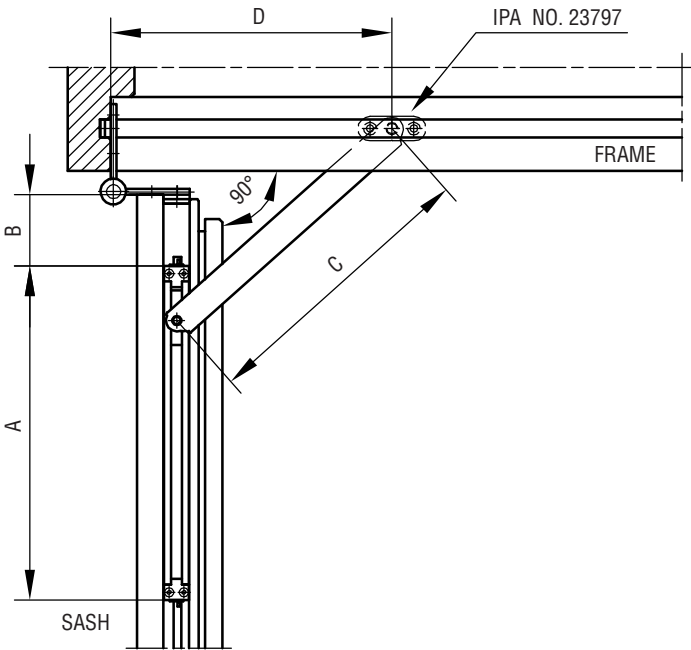


FIG. 1  
IPA NO. 23820-21  
LEFT

THE FRICTION STAY FOR DOORS  
COMES AS LEFT AND RIGHT  
USE LEFT FOR A LEFTHUNG DOOR.

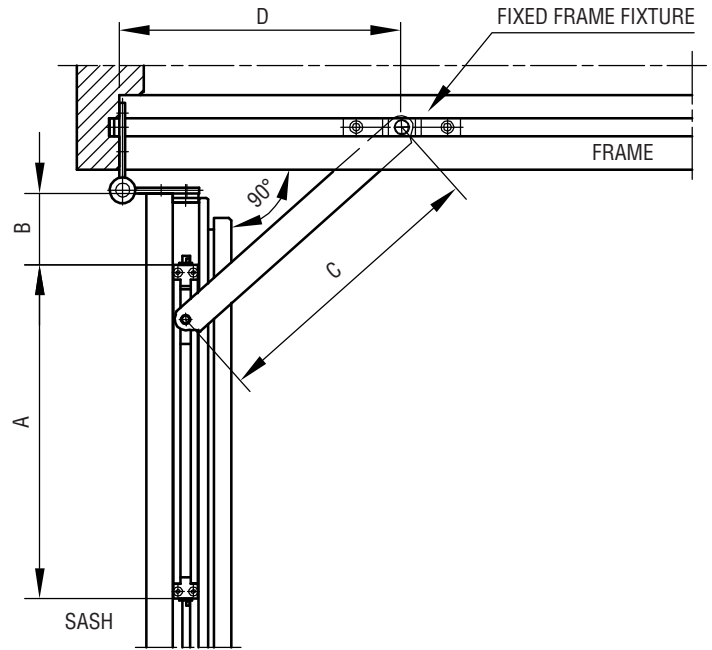


FIG. 2  
IPA NO. 23822-23  
LEFT

THE FRICTION STAY FOR DOORS  
COMES AS LEFT AND RIGHT  
USE LEFT FOR A LEFTHUNG DOOR.

IPA NO.	SASH WIDTH MM	A MM	B MM	C MM	D MM
23820	691 - 900	435	195	330	230
23821	901 - 1100	465	305	450	280
23822	691 - 900	435	195	330	230
23823	901 - 1100	465	305	450	280

FIG. 3

#### EXAMPLE WOOD PROFILE

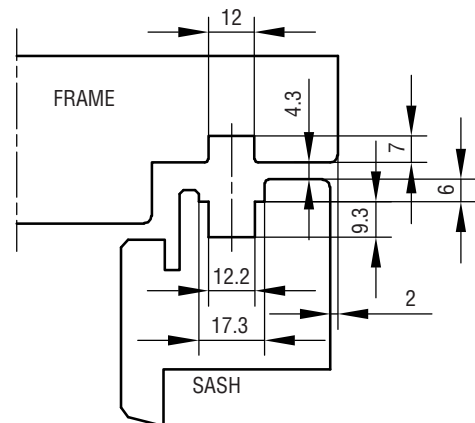


FIG. 4

#### FITTING INSTRUCTIONS:

- ALUMINIUM RAIL WITH ARM IS MOUNTED IN THE TOP OF THE SASH.  
USE 4 PCS SCREW NO. 3.
- 21820-21: THE PLASTIC FRAME FIXTURE IS MOUNTED IN THE TOP OF THE FRAME.  
USE 2 PCS. SCREW NO. 4. - SEE FIG. 1.  
21822-23: THE FIXED FRAME FIXTURE IS MOUNTED IN THE TOP OF THE FRAME.  
USE 2 PCS. SCREW NO. 4. - SEE FIG. 2.
- 21820-21: THE ARM IS PRESSED IN PLACE IN THE FRAME FIXTURE.

WHEN THE OPENING ANGEL IS MORE THAN 90° A MECHANICAL RESTRICTOR WHICH PREVENTS THE DOOR FROM OPENING MORE THAN 90° MUST BE FITTED.

#### MAINTENANCE:

THE FITTINGS ARE NOT TO BE PAINTED. TEST THE OPERATION FROM TIME TO TIME.  
WHEN MOUNTING - LUBRICATE THE PIVOT/ MOVABLE METAL PARTS OF THE MECHANISM WHILE ACTIVATING REPEATEDLY. HEREAFTER LUBRICATE MINIMUM TWICE A YEAR. DO NOT LUBRICATE THE ALUMINIUM RAILS.