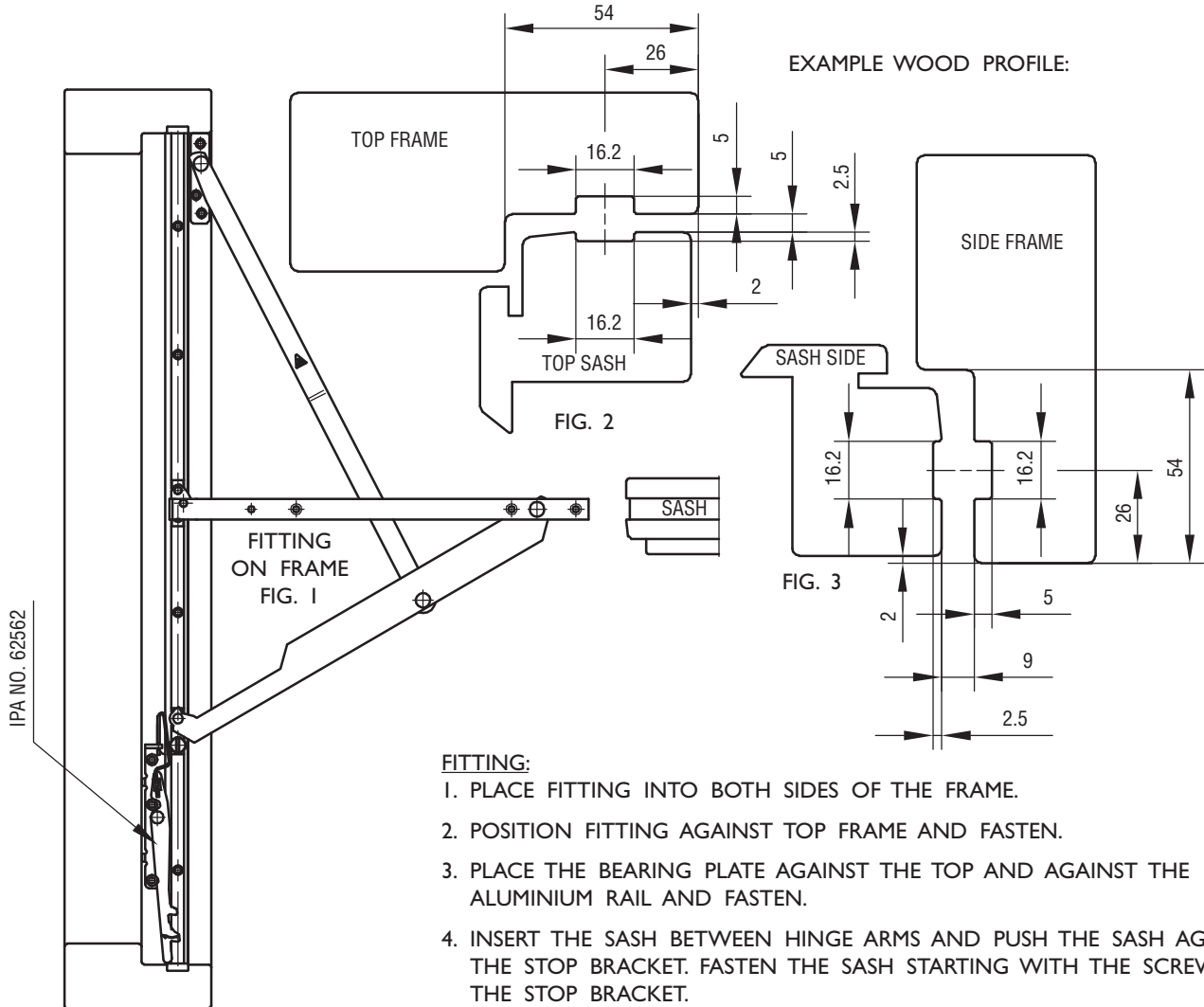


FITTING INSTRUCTIONS

TOP SWING FITTING IPA NO.s 62506-12
 AND SAFETY CATCH IPA NO. 62562

IMPORTANT: THE SIDE FRAMES MUST BE STRAIGHT TO THE EFFECT THAT THE DISTANCE BETWEEN THE SIDE FRAMES (SLIDING RAILS) IS EXACTLY THE SAME FOR ANY HEIGHT OF THE FRAME. THIS IS IMPERATIVE FOR THE SLIDES TO TRAVEL FREELY IN THEIR ALUMINIUM RAILS.



FITTING:

1. PLACE FITTING INTO BOTH SIDES OF THE FRAME.
2. POSITION FITTING AGAINST TOP FRAME AND FASTEN.
3. PLACE THE BEARING PLATE AGAINST THE TOP AND AGAINST THE ALUMINIUM RAIL AND FASTEN.
4. INSERT THE SASH BETWEEN HINGE ARMS AND PUSH THE SASH AGAINST THE STOP BRACKET. FASTEN THE SASH STARTING WITH THE SCREW IN THE STOP BRACKET.
5. THE SASH CAN BE OPENED TO ANY ANGLE. WITH LARGE OPENING ANGLE A LIGHT FRICTION CAN BE OBTAINED BY MEANS OF THE FRICTION SCREWS IN THE SIDES. THE FRICTION HAS TO BE THE SAME ON BOTH SIDES. PLEASE NOTE THAT THE SASH IS NOT SECURED FOR HEAVY WINDS AND OTHER HEAVY INFLUENCE.
6. FIT THE RESTRICTOR IPA NO. 62562 ON THE LEFT SIDE, SEE FIG. 1.

USE SCREW NO. 4.0.

OPERATION INSTRUCTIONS:

1. OPEN THE WINDOW - THE RESTRICTOR WILL AUTOMATICALLY RESTRICT THE WINDOW.
2. PULL THE SASH 20 MM - PRESS THE RESTRICTOR IN THE DIRECTION OF THE ARROW AND OPEN THE WINDOW.
3. WHEN THE WINDOW IS REVERSED FOR CLEANING, THE RESTRICTOR WILL ENGAGE AUTOMATICALLY. DISENGAGE AS MENTIONED IN POINT 2.

MAINTENANCE:

THE FITTINGS ARE NOT TO BE PAINTED. WHEN FITTING - LUBRICATE THE PIVOT/MOVABLE METAL PARTS OF THE MECHANISM WHILE ACTIVATING REPEATEDLY. HEREAFTER LUBRICATE MINIMUM TWICE A YEAR. DO NOT LUBRICATE THE ALUMINIUM RAILS. TEST THE OPERATION FROM TIME TO TIME.

IPA NO.	LENGHT OF FITTINGS MM	MAX. WEIGHT KG	INSIDE FRAME MM
62506	744	45	744-843
62507	844	60	844-943
62508	944	60	944-1043
62509	1044	60	1044-1143
62510	1144	60	1144-1243
62511	1244	60	1244-1343
62512	1344	60	1344-1444
USE THE LARGEST POSSIBLE FITTING			
ATTENTION: MAX. WIDTH = HEIGHT + 300 MM, HOWEVER MAX. 1600 MM.			