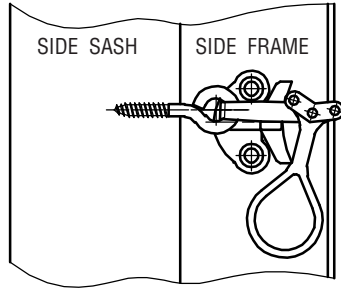


FITTING INSTRUCTIONS

CASEMENT HOOK IPA NO.s 21383-96 + 21593-94

CASEMENT HOOK WITH EYE SCREW



CASEMENT HOOK WITH SCREW PLATE

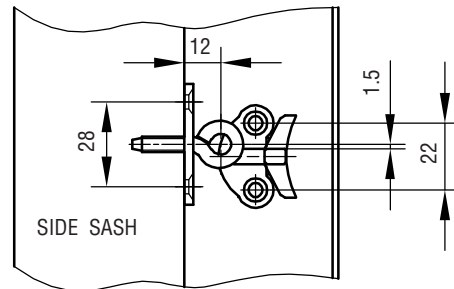
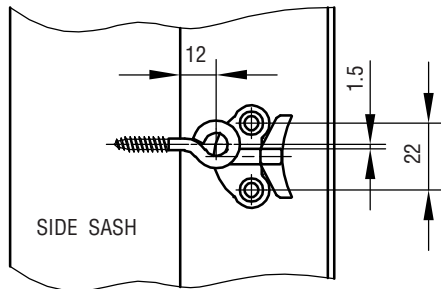
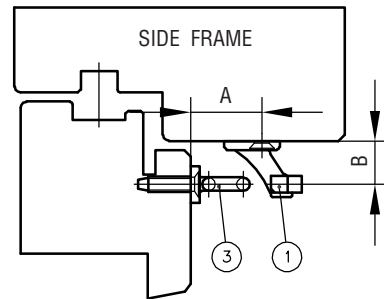
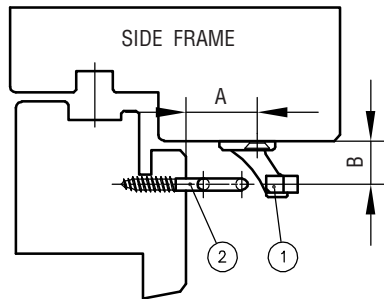
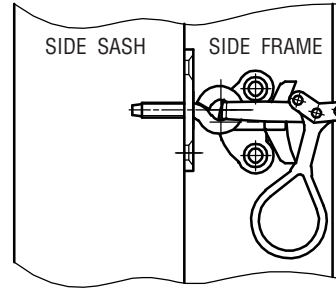


FIG. 1

IPA NO.s 21385 + 21388-92

FIG. 2

IPA NO.s 21383 + 21386 + 21393-96 + 21593-94

IPA NO.	21385 21391 - 92	21388	21389	21390	21383 + 96	21386 21393 - 94	21593 - 94
A MM	24	19	11	20	23	27	27
B MM	14	14	15	14	14	14	19

MONTERING:

1. MOUNT THE RECEIVER (1), ON SIDE FRAME IN THE WANTED HEIGHT.

2. IPA NR. 21385 + 21388-92: MEASURE PRECISELY ON THE SIDE SASH FOR THE CASEMENT HOOK WITH EYE SCREW (2). PRE-DRILL A HOLE FOR THE EYE SCREW. FASTEN THE CASEMENT HOOK WITH EYE SCREW.

IPA NR. 21383 + 21386 + 21393-96 + 21593-94: MEASURE PRECISELY ON THE SIDE SASH FOR THE CASEMENT HOOK WITH SCREW PLATE (3). PRE-DRILL A 5.0 MM HOLE FOR THE THREADED SCREW AND PRE-DRILL THE HOLES FOR THE EYE SCREWS. MARK UP FOR THE 2 SCREW HOLES ON THE SASH AND PRE-DRILL THE HOLES. FASTEN THE CASEMENT HOOK WITH SCREW PLATE.