

IPA INFORMATION

HINGES

FOR SAW GROOVES



A/S J. PETERSENS BESLAGFABRIK

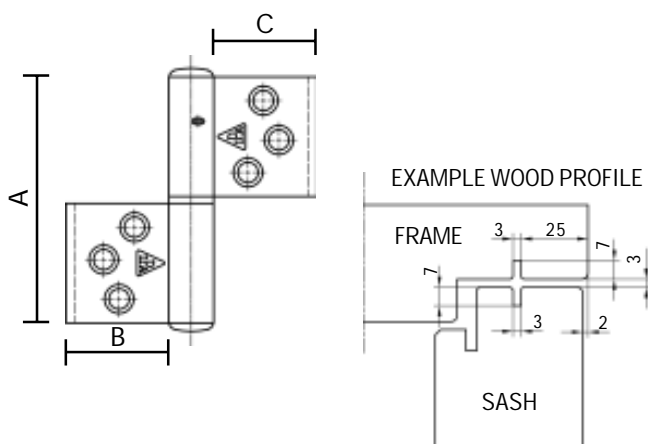
JACOB PETERSENSVEJ 9, DK-9240 NIBE

TEL.: (+45) 98 35 15 00



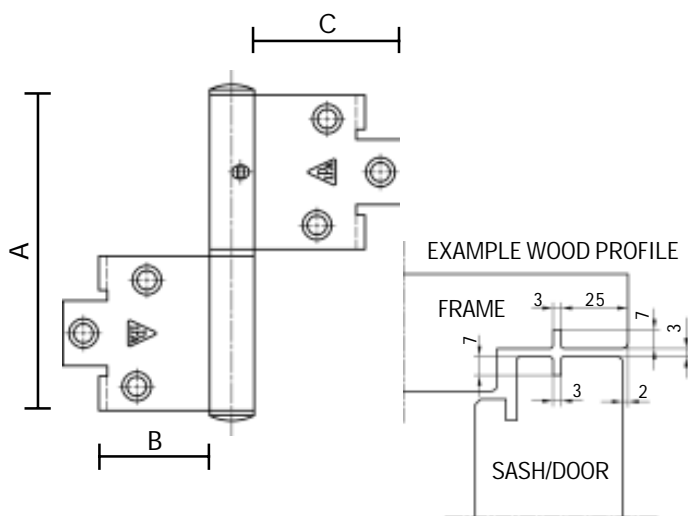
HINGES FOR SAW GROOVES

- For easy and rational manufacturing of windows and doors
- No investment in tools
- Standard surface treatment:
 - Hot Dip Galvanized
 - Electroplated yellow
- By request in any RAL-colour



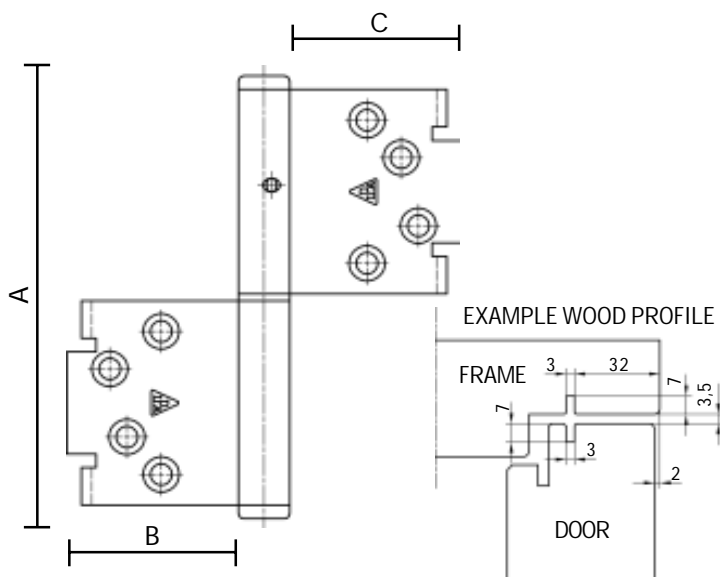
WINDOW HINGES

ORDERING NO.		MATERIAL		SURFACE		STANDARD PACKING IN BOXES OF 10 PCS.		A MM	B MM	C MM	THICKNES PLATE MM	PIN MM	SCREW
IPA NO.	STEEL FIXED BRASS PIN	SQUARE EDGES LEFT	SQUARE EDGES RIGHT	Electroplated Yellow	Galvanized	1	70	30	30	2,5	8	4,0	
				3	4								25
11175	3	3	4	25	87	1	70	30	30	2,5	8	4,0	
11176	3	3	4	25	87	1	90	30	30	2,5	8	4,0	



WINDOW & DOOR HINGES

ORDERING NO.		MATERIAL		SURFACE		STANDARD PACKING IN BOXES OF 10 PCS.		A MM	B MM	C MM	THICKNES PLATE MM	PIN MM	SCREW
IPA NO.	STEEL FIXED BRASS PIN	SQUARE EDGES LEFT	SQUARE EDGES RIGHT	Galvanized	Electroplated Yellow	1	90	32	42,5	2,5	8	4,0	
				3	4								87
11183	3	3	4	87		1	90	32	42,5	2,5	8	4,0	
11185	3	3	4	87		1	90	74	84,5	2,5	8	4,0	

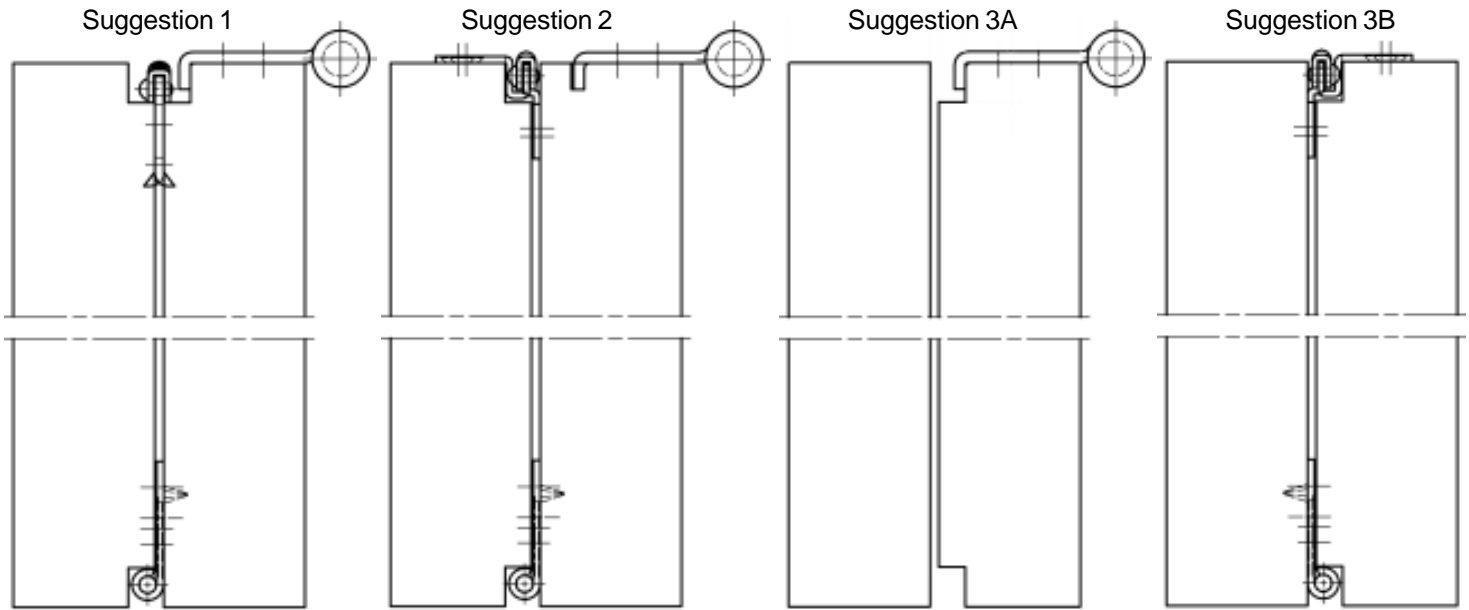


DOOR HINGES

ORDERING NO.		MATERIAL		SURFACE		STANDARD PACKING IN BOXES OF 10 PCS.		A MM	B MM	C MM	THICKNES PLATE MM	PIN MM	SCREW
IPA NO.	STEEL FIXED BRASS PIN	SQUARE EDGES LEFT	SQUARE EDGES RIGHT	Electroplated Yellow	Galvanized	1	120	50	50	3	9	5,0	
				3	4								25
11193	3	3	4	25	87	1	120	50	50	3	9	5,0	

HINGES FOR SAW GROOVES

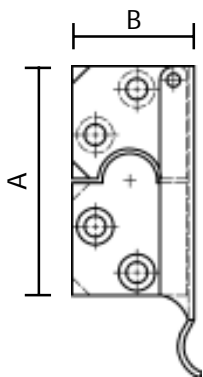
FOR DOUBLE SASHES



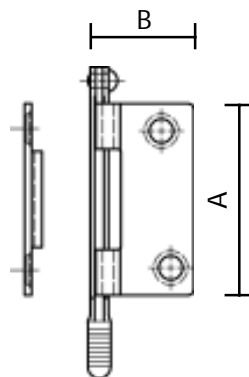
With coupling fitting
IPA No. 21455 and butt
hinge IPA No. 13231

With coupling fitting
IPA No. 21456 and butt
hinge IPA No. 13231

Similar to suggestion 2. Instead of cutting the special
saw groove, you may be able to use the rebate both for
the coupling fitting and for the butt hinge.



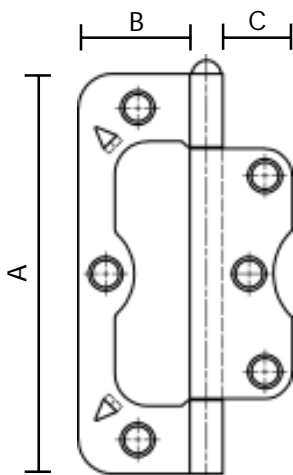
IPA No. 21455



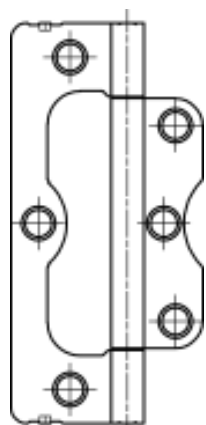
IPA No. 21456

FITTINGS FOR COUPLING SASHES using hinges for saw grooves

ORDERING NO.												
IPA NO.	MATERIAL		SURFACE		STANDARD PACKING IN BOXES OF 10 PCS.	INDUSTRY PACKING IN BOXES OF 500 PCS.	A MM	B MM	THICKNESS PLATE MM	SCREW		
	STEEL FIXED BRASS PIN	STEEL LOOSE STEEL PIN	ROUND EDGES	PHOSPBROWN							ELECTROPLATED	ELECTROPL.YELLOW
21455	1	-	7	8	21	25	1	-	67	25	2	3,5
21456	1	-	7	8	21	-	1	2	42	23	1,5	3,5



IPA No. 13231
(ill. with a loose pin)



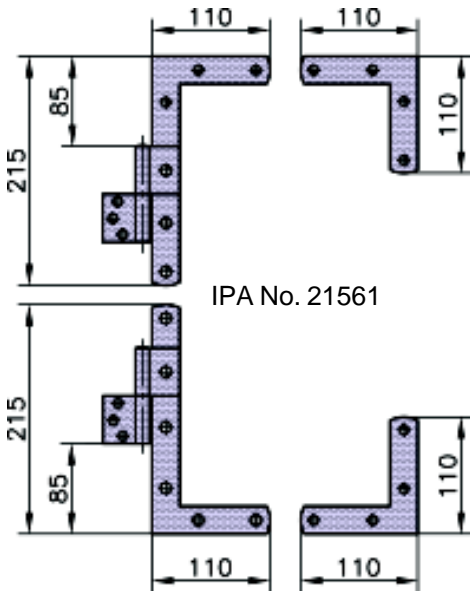
IPA No. 13231-Spec.
(ill. with a fixed pin)
(IPA No. 13231-Spec.
has smaller spikes than
IPA No. 13231-Standard)

BUTT HINGES for coupled sashes

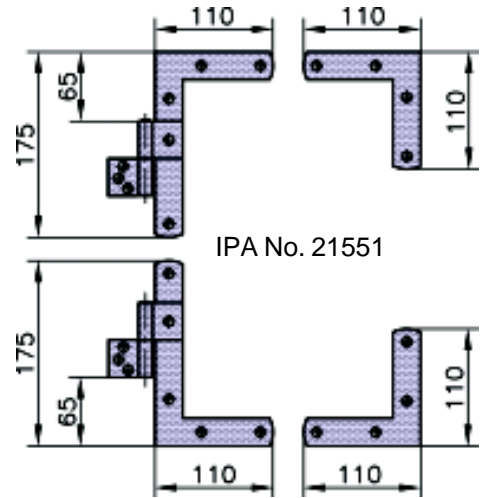
ORDERING NO.													
IPA NO.	MATERIAL		SURFACE			STANDARD PACKING IN BOXES OF 20 PCS.	A MM	B MM	C MM	THICKNESS PLATE MM	PIN MM	SCREW	
	STEEL FIXED STEEL PIN	STEEL LOOSE STEEL PIN	ROUND EDGES	PHOSPBROWN	ELECTROPLATED								ELECTROPL.YELLOW
13231	2	-	5	-	-	25	1	88	24	15	1,6	4	3,5
	-	4	5	12	21	25	1						

IPA No. 13231-Special: Delivery time 4-5 weeks.

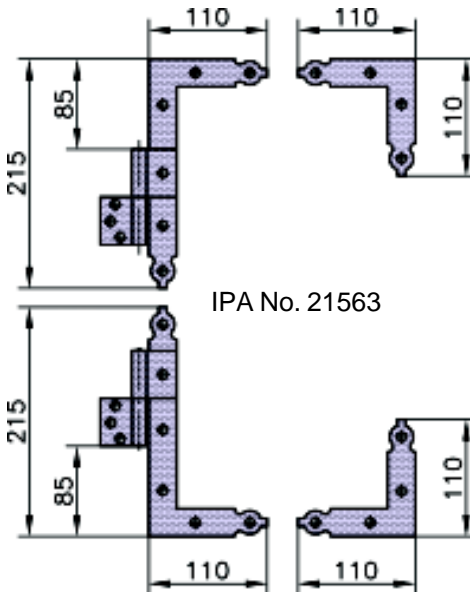
HINGES FOR SAW GROOVES AS ANGLE BRACKET HINGES



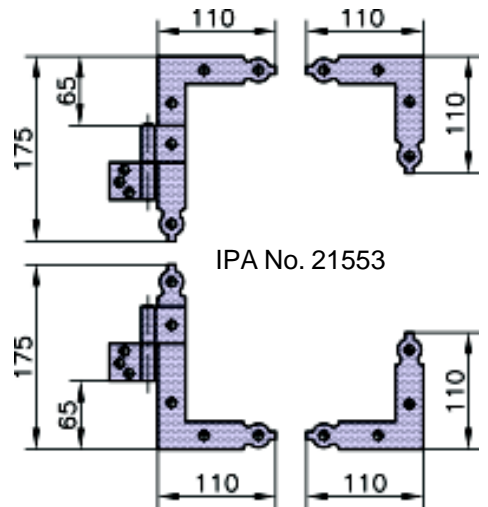
IPA No. 21561



IPA No. 21551

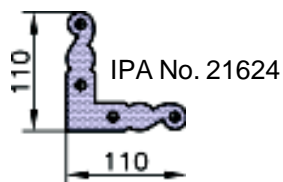


IPA No. 21563

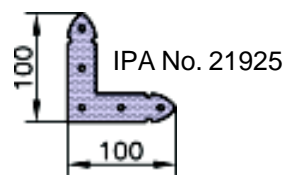


IPA No. 21553

As special orders angle bracket hinges for saw grooves can be delivered with same design as brackets shown below.



IPA No. 21624



IPA No. 21925

*For further information, please contact
A/S J. Petersens Beslagfabrik, Phone (+45) 98 35 15 00*